

PIN#	DESCRIPTION	COLOUR
1	+12/24V	RED
2	TRIGGER 3	WHITE/BLUE
3	TRIGGER 2	BLUE
4	TRIGGER 4	BROWN
5	TRIGGER 1	PURPLE
6	GROUND	SHIELD
7	CA1 VIDEO	YELLOW
8	CA1 AUDIO	WHITE/YELLOW
9	CA1 +12V	LIGHT RED
10	CA2 VIDEO	WHITE
11	CA2 AUDIO	LIGHT GREEN
12	GROUND	BLACK
13	CA2 +12V	WHITE/RED
14	CA3 +12V	WHITE/GREEN
15	CA4 VIDEO	ORANGE
16	CA4 AUDIO	LIGHT BLUE
17	CA4 +12V	GREEN
18	CA3 VIDEO	WHITE/ORANGE
19	CA3 AUDIO	WHITE- GREEN
20	TRIGGER 5	WHITE/BLACK
21	NOT USED	NO CONNECTION
22	NOT USED	NO CONNECTION

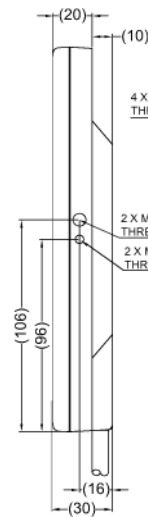
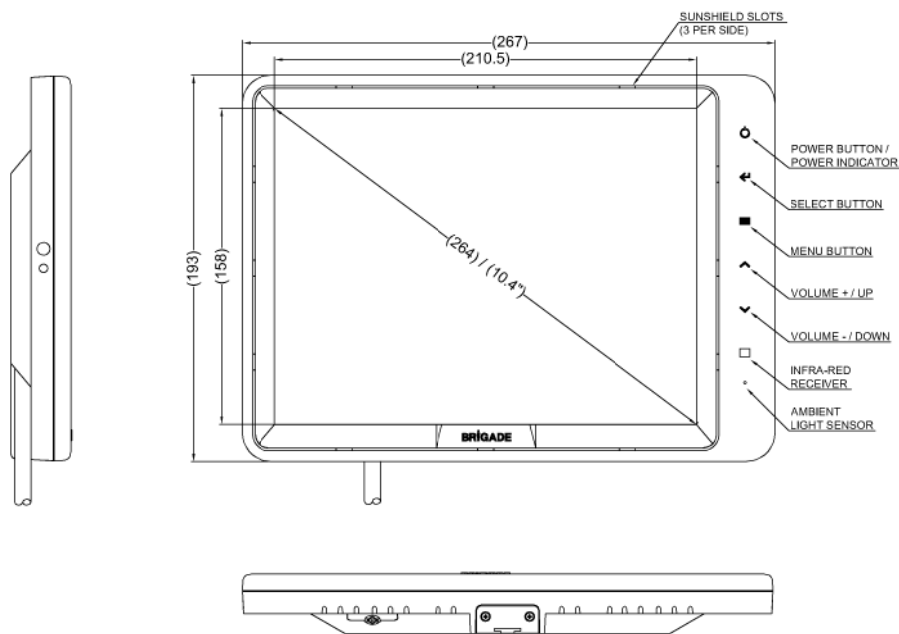
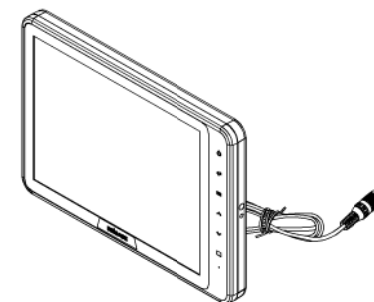
VIEW A



22 PIN MALE MATING FACE

Revision Notes.

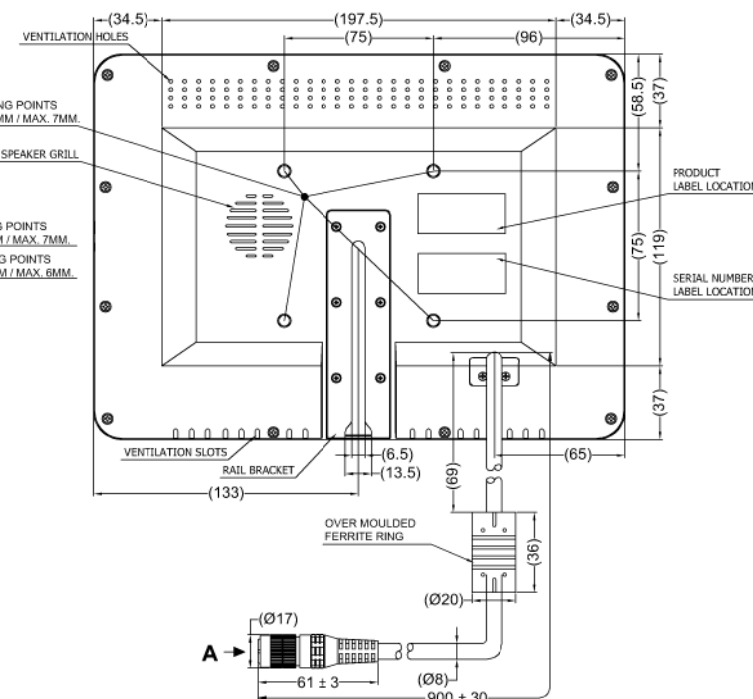
R1 - DRAWING UPDATE CONFIRMING LATEST FIRMWARE FROM BE-VBV-7104FM-V2.5 TO BE-VBV-7104FM-V2.6 AS PER ECR-A628				
APA: J.LAM	Drawn:M.ZAMUDIO	Checked:M.BUTLER	Approved:B.JOHN	Date: 29/05/2018
R2 - DRAWING UPDATE CONFIRMING LATEST FIRMWARE FROM BE-VBV-7104FM-V2.6 TO BE-VBV-7104FM-V2.9 AS PER ECR-A655.				
APA: SHADOW ISKI	Drawn:J.STEWART	Checked:w.BEAZLEY	Approved:S.LAVER	Date: 15/01/2019
R3 - DRAWING UPDATE CONFIRMING LATEST FIRMWARE FROM BE-VBV-7104FM-V2.9 TO BE-VBV-7104FM-V2.10 AS PER ECR-A676.				
APA: SHADOW ISKI	Drawn:J.STEWART	Checked:w.BEAZLEY	Approved:D.WALLIN	Date: 06/08/2019



4 X M5X0.8MM MOUNTING POINTS
THREAD DEPTH MIN. 6MM / MAX. 7MM.

2 X M5X0.8MM MOUNTING POINTS
THREAD DEPTH MIN. 6MM / MAX. 7MM.

2 X M3X0.5MM MOUNTING POINTS
THREAD DEPTH MIN. 5MM / MAX. 6MM.



- NOTES:**
- REFER TO "PRODUCT SPECIFICATION" FOR MORE DETAILS
 - FOR PRODUCT LABEL REFER TO MASTER BILL OF MATERIALS
 - FOR PRODUCT SERIAL NUMBER LABEL REFER TO TO MASTER BILL OF MATERIAL
 - FIRMWARE VERSIONS TO BE PRELOADED TO THE MONITOR DURING MANUFACTURE: BE-VBV-7104FM-V2.10 (QUAD AND OSD); ITE7235-MO711-01-V1.3 (TOUCH BUTTON).
 - FERRITE SPECIFICATION: 100Ω/25MHz, 200Ω/100MHz
 - FRONT HOUSING: MATERIAL ABS 758 TRANSPARENT PLASTIC. COATING PROCESS SEQUENCE: WHITE PAINT (PL120-4869); BLACK PAINT (PL120-3897); BUTTON SYMBOLS LASER CARVING / EMBOSSED LOGO TO BE SILK PRINTED IN WHITE PAINT (PL120-4869); SOFT TOUCH PAINT (FL400-0196)
 - REAR HOUSING AND CABLE CLAMP: MATERIAL ABS 757 BLACK PLASTIC. COATING PROCESS SEQUENCE: BLACK PAINT (PL120-3897); SOFT TOUCH PAINT (FL400-0196)

PROPRIETARY NOTICE
THIS DESIGN AND TECHNICAL INFORMATION APPEARING ON THIS DRAWING IS THE PROPERTY OF BRIGADE ELECTRONICS. AND IS DISCLOSED IN CONFIDENCE. IT IS NOT TO BE COPIED, REPRODUCED, REVEALED TO OR EXPROPRIATED BY OTHERS, EITHER IN WHOLE OR IN PART WITHOUT THE EXPRESS WRITTEN CONSENT OF BRIGADE ELECTRONICS.

BRIGADE
www.brigade-electronics.com

Assembly Pl Approval J.LAM 10/05/18	Approved by B.JOHN	Checked by M.BUTLER	Drawn by M.ZAMUDIO
Angle of Projection Third Angle	Units mm	Scale N/A	Released -
Status RELEASED	VBV-7104FM-M		
Part No 4468B	BE-003755-03-18		